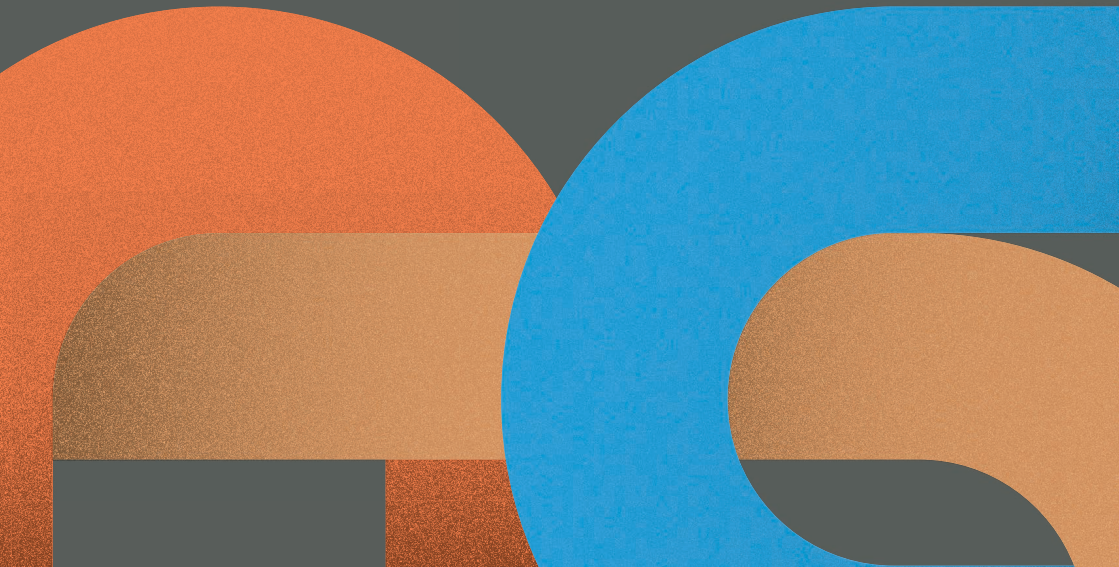




**Aldinga
Payinthe
College.**

**Primary Learning Community
Information**



**Together, we seek
to inspire, connect
and belong.**



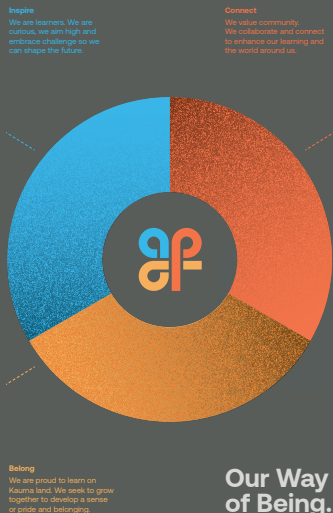
Jarrod Lamshed
Head of Primary Learning Community

Seek Beyond.

Curriculum Approach

Children engage with the Australian Curriculum through an integrative approach, focussing on authentic opportunities centred on learners' interests and developmental stages. Capabilities are developed through explicit instruction and applied through meaningful experiences linking to local and global communities.

Continuity of learning and consistency of practice will guide the learning experiences to ensure that all children learn and progress. Our purpose-built premises support our vision for an innovative learning environment where children will be inspired and connected to their learning, each other, and the community, and develop a sense of belonging and pride.



Our Way of Being

Inspire: We are learners. We are curious, we aim high and embrace challenge so we can shape the future.

Connect: We value community. We collaborate and connect to enhance our learning and the world around us.

Belong: We are proud to learn on Kaurna land. We seek to grow together to develop a sense of pride and belonging.

Families

We recognise parents and carers as their child's most important influence. We seek to form strong partnerships with families to support the learning, wellbeing and development of every child. Families are encouraged to participate in college life and contribute their knowledge, skills, and ideas to make the college a place where everyone feels a sense of belonging and connection.

Home Learning

Literacy and numeracy skills are the foundation to successful learning and enable access to all areas of the curriculum. In the primary learning community, we prioritise the development of strong literacy and numeracy skills through a personalised approach whereby each learner receives instruction and support materials aligned to their individual needs.

Families can support learners to establish positive home learning practices.

Useful strategies include:

- Extended conversations that expose your child to new ideas and vocabulary.
- Reading with your child, listening to them read every day and encouraging independent reading.
- Supporting your child with tasks or games sent home to build mastery and reinforce ongoing learning.

Assessment and Reporting

You and your child can access evidence of learning and teacher/peer feedback throughout the year via Frog, our online Learner Management System.

Learners receive a written report twice a year, in Terms 2 and 4, with comments on their learning journey to date, an outline of next steps, and achievement against expected standards. Learners reflect on their progress and strengths, and identify knowledge, skills and understandings they need to develop further.

In Terms 1 and 3, learners and families take part in a discussion with their class teachers where they reflect upon their efforts and discuss what they, their family and college staff need to focus on to further advance their progress.

Learners with a One Plan, and their families, meet with their Lead Plan Teacher in Term 2 for a formal review of their plan and again in Term 4 for an interim review.

In addition, we invite you to make contact at any time throughout the year to arrange a discussion about your child's learning.

Technology

At Aldinga Payinthe College we integrate technology using iPads across all year levels. Through access to digital technologies, children can benefit from learning that is interactive, collaborative, personalised and engaging. Digital technologies enable our learners to interact with and create high quality content, resources, and tools.

Learners in Reception to Year 2 will have access to shared devices while learners in Years 3 to 6 will each have access to an iPad for use at the college. These devices are provided with technical support and app management which allows the college to provide a consistent software and hardware experience and ensures that all devices support a strong learning focus. To ensure that all learners have access to the same technology the college does not support a 'bring your own device' option.

Times of Day

The college day begins at **9:10am** and ends at **3:25pm**.

Arrival and Departure

Learners may arrive on-site from 8:50am at which time the central piazza and primary playground will be supervised. Afternoon supervision of the yard will end at 3:40pm. When arriving late or departing early, learners must pass through reception in the Community Hub to be signed in or out.

Drop off and Pick up

Limited short-term parking is available for families. Children who ride a bike must secure it in the bike cage using a bike lock. Please be aware the bike cage will be open daily from 8:45 - 9:20am and 3:20 - 3:45pm. Access outside these times must be negotiated through reception in the Community Hub.

Communication

If you would like to contact your child's teacher, please send messages via Daymap, or ring reception. Whilst teachers are always keen to connect with families, it is important that they can prepare the environment for each day's program and connect meaningfully with learners as they arrive.

To notify the college of an absence, please contact reception via Daymap, email or phone.

Organisation

What to bring:

- Bag – a college branded bag is available but optional for purchase.
- Learners in Years 3-6 may wish to bring a pencil case – stationery is provided.
- Water bottle – refillable at the college with cool water bubblers widely available.
- Lunch, and healthy snacks for recess and nibbling throughout the day.
- Learning materials sent home (reading materials, games, charged iPad for learners in Years 5 and 6).

What to leave home:

- Items of personal value.

Of note:

- Aldinga Payintha College is allergy aware, and staff will adjust programs based on the health and safety needs of every child.
- Our Healthy Eating and Physical Activity Policy encourages the eating of healthy food.
- Please ensure every item sent to and worn at the college is labelled with your child's name.

Uniform

A uniform plays an important role in promoting a positive image of the college and creating a sense of identity among students and the community. The uniform design reflects the contemporary nature of Aldinga Payintha College and includes selections for a range of weather conditions and personal needs. College uniform items can be purchased direct from Devon Clothing (devonclothing.com.au).



The design featured on the polo was created by Ngarrindjeri artist Jordan Lovegrove. The college is represented along with the connections we will make within our community. The large pathway leading through the artwork symbolises the learning journey we will travel together.

Mobile Phones

Mobile phones are not allowed to be used at the college and must remain turned off and in bags during the day. Locker locks are available for Years 3-6 learners who wish to secure their bags.

Sun Safety

Primary learners are required to wear a hat when outside during Terms 1, 3 and 4. In Term 2, hats must be worn when the UV rating is 3 or more. An approved college hat is included within the college's Uniform Policy.

Please encourage your child to apply sunscreen before arrival. Sunscreen will be available for children to reapply during the day. If your child has allergies, please supply your own labelled sunscreen and indicate this on the enrolment form in the health and allergy section.

Fees

The Materials & Services Charge is \$320.00. As per our Fees Policy, families will be invoiced directly, and payment is to be made by the invoice date. There are a range of payment options available:

EFT

Direct payments can be made to the college's bank account:

BSB - **065 188**

Account Number - **1012 2583**

Please use your child's full name as the reference.

Credit Card

The college has credit card facilities available. Please visit the main reception area if you would like to pay via credit card.

QkR!

Payment can be made through the QkR! app. Download the app from your preferred app store.

Out of School Hours Care

YMCA is operating an Early Learning and Care program and OSHC at Aldinga Payinthe College. For enrolment and enquiries, please refer to the YMCA website.

Canteen

The college's canteen will be managed by our service provider, *Rory's School Lunches*. All food will comply with the Healthy Eating Guidelines and made by an in-house chef. Lunches can be pre-ordered, and payment made through the QkR! app. For more information visit <https://rorys.com.au/information-for-parents/>.



**Government
of South Australia**

Department for Education

Proud to learn on Kurna Land.

Aldinga Payinthe College

150 Quinliven Road

Aldinga SA 5173

P. (08) 7505 6100

E. dl1914.info@schools.sa.edu.au

aldingapayinthicollege.sa.edu.au