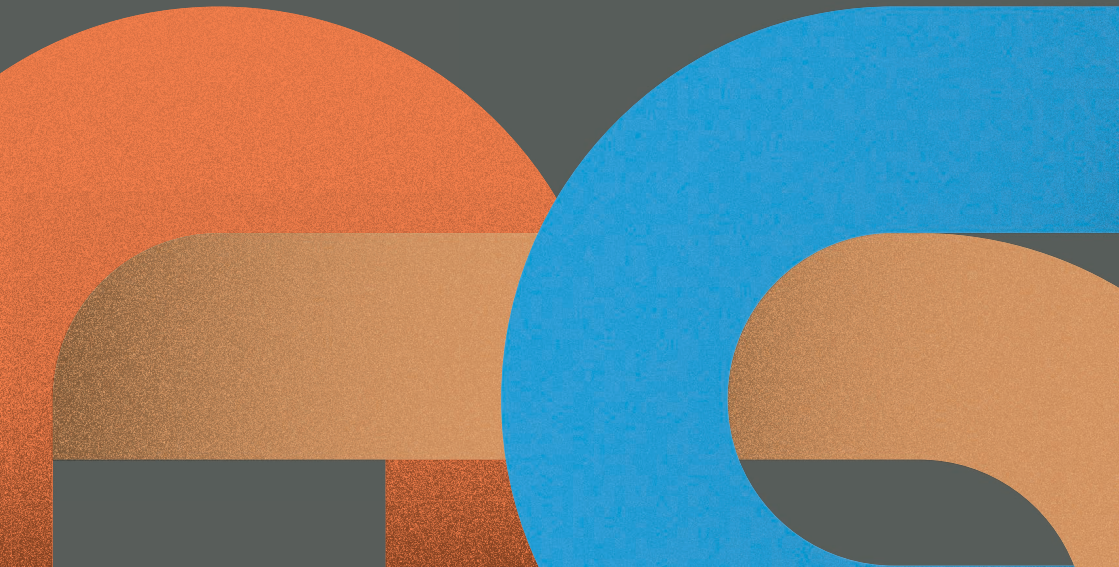




**Aldinga  
Payinthe  
College.**

**Secondary Learning Community  
Information**



# Together, we seek to inspire, connect and belong.



*My name is Amanda Baldock. I have worked in secondary education as a teacher, year level leader, faculty leader and Assistant Principal. I am a passionate educator and a strong believer in supporting learners to identify and explore their unique strengths, and support them to realise their potential and become principled, grounded and socially responsible. I'm excited to be sharing this journey with you.*

**Amanda Baldock**  
**Head of Secondary Learning**  
**Community**



*My name is Andrew Charlton. I have been fortunate enough to work in public education for over 20 years with experience in many roles including faculty/curriculum leads and various leadership roles. I have worked tirelessly to support all learners with a view to create learning opportunities for all. I am values driven and aim to 'walking alongside' (coach) each learner to support their development to their next stage in life.*

**Andrew Charlton**  
**Head of Middle Years**  
**Learning Community**

# Seek Beyond.

## Curriculum Approach

Teaching and learning at Aldinga Payinthe College has been designed to inspire and excite our learners and allow them to connect to each other, the college and our local community. Learners are given the opportunity to learn in a variety of ways, at times independently and often in collaboration. Our learning spaces are designed for flexibility and our specialist teaching areas support high level concept development.

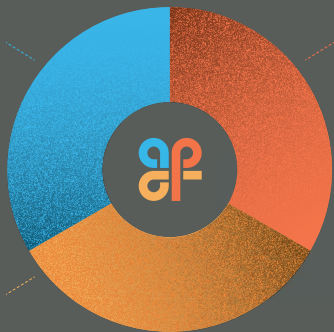
Our year 7 and 8 learners are vertically aligned allowing them to work together, enabling us to provide programs that are responsive to learner's developmental and learning needs while still engaging and rewarding. Our year 9 and 10 learners are independent year levels, providing challenge and rigour, while looking at future opportunities and experiences for exploring pathways beyond school.

Learners engage with the Australian Curriculum through an integrative approach, focussing on authentic opportunities centred on learners' interests and developmental stages. Capabilities are developed through explicit instruction and applied through meaningful experiences linking to local and global communities.

Our year 10s begin their journey into senior secondary education through Exploring Identities and Futures (EIF) and foundation courses ready for South Australian Certificate of Education (SACE).

**Inspire**  
We are learners. We are curious, we aim high and embrace challenge so we can shape the future.

**Connect**  
We value community. We collaborate and connect to enhance our learning and the world around us.



**Belong**  
We are proud to learn on Kaurna land. We seek to grow together to develop a sense of pride and belonging.

## Our Way of Being

**Inspire:** We are learners. We are curious, we aim high and embrace challenge so we can shape the future.

**Connect:** We value community. We collaborate and connect to enhance our learning and the world around us.

**Belong:** We are proud to learn on Kaurna land. We seek to grow together to develop a sense of pride and belonging.

## Our Way of Being.

## **Families**

We seek to form strong partnerships with families to support the learning, wellbeing and development of every learner. Families are encouraged to participate in college life and contribute their knowledge, skills and ideas to make the college a place where everyone feels a sense of belonging and connection.

## **Home Learning**

The purpose of home learning is to enable learners to:

- Build mastery and reinforce learning occurring at the college.
- Embed knowledge and skills.
- Assist learners in developing the capacity to prioritise tasks and organise time.

Families can support learners to establish good home learning practices.

Useful strategies include:

- Extended conversations that expose your child to new ideas and vocabulary.
- Helping to establish regular study habits, e.g. set times away from social media, streaming movies and games.
- Supporting your child to have appropriate sleep routines.
- Limiting the use of media, technology, television, streaming and games.
- Supporting your child to work in an environment conducive to learning, e.g. good lighting/seating.
- Assisting your child to establish sound organisational skills, e.g. bringing the correct resources home, ensuring their iPad is charged each night, and the importance of structured time management for long-term projects.

## **Assessment and Reporting**

Learners receive a written report twice a year, in terms 2 and 4, with comments on their learning journey to date, an outline of next steps, and achievement results. Learners reflect on their progress and strengths, and identify knowledge, skills and understandings they need to develop further.

In terms 1 and 3, learners and their families take part in a learning discussion with their Connect teacher and subject teachers on request. This discussion will enable learners to reflect on and discuss their learning efforts and consider areas of extension or improvement.

Learners with a One Plan and their families meet with their Lead Plan Teacher in term 2 for a formal review of their plan and again in term 4 for an interim review.

In addition, we invite you to make contact at any time throughout the year to arrange a discussion about your child's learning.

## Technology

Through access to digital technologies, young people can benefit from learning that is interactive, collaborative, personalised and engaging. While the purchase of an iPad is not compulsory, it is strongly recommended. To ensure that all learners have access to the same technology the college does not support a 'bring your own device' option. Loan devices (college use only) will be available to ensure that no learner is disadvantaged.

All learners must bring their iPad **fully charged** each day.

## Times of Day

The college day begins at **9:10am** and ends at **3:25pm**.

There are three sessions across the day. Each session is 105 minutes and includes a pastoral care element or wellbeing check-in.

## Drop off and Pick up

Limited short-term parking is available for families. Children who ride a bike to the college must secure their bike in the bike cage using a chain and lock. Please be aware the bike cage will be open daily from 8:45 - 9:20am and 3:20 - 3:45pm. Access outside these times will need to be negotiated through reception in the Community Hub.

## Communication

Communication between the college and home will primarily be through Daymap, our online Learner Management System, where you will be able to find information regarding college events, timetable and learning.

To notify the college of an absence, please contact reception via Daymap, email or phone

## Lockers and Storage of Valuables

Learners will be issued a locker and combination lock near their main learning community. Bags and valuables, including mobile phones and smart devices, are to be stored in lockers throughout the day.

## Sun Safety

Secondary learners are encouraged to wear a hat when outside. An approved college cap is included within the *Dress Code Policy - Learners* specifically for secondary learners, although they may also choose to wear the bucket hat.

Please encourage your child to apply sunscreen before arriving at college. Sunscreen will be available to reapply during the day. If your child has allergies, please supply your own labelled sunscreen and indicate this on the enrolment form in the health and allergy section.

## Organisation

### What to bring:

- Bag – a college branded bag is available but optional for purchase.
- Learners may wish to bring a pencil case – stationery is provided.
- Water bottle – refillable at the college with cool water bubblers widely available.
- Lunch and snacks for eating across the day.
- Learning materials sent home.
- **Charged iPad** – devices are expected to be fully charged each day. Learners **will not** be able to charge devices at the college.

### What to leave home:

- Items of personal value.

### Of note:

- Aldinga Payinithi College is allergy aware, and staff will adjust programs based on the health and safety needs of every child.
- Our Healthy Eating and Physical Activity Policy encourages the eating of healthy food.
- Please ensure every item sent to and worn at the college is labelled with your child's name.

## Uniform

A uniform plays an important role in promoting a positive image of the college and creating a sense of identity among learners and the community. The uniform design reflects the contemporary nature of Aldinga Payinithi College and includes selections for a range of weather conditions and personal needs. College uniform pieces, including a selection of items designed especially for those in the secondary learning community, can be purchased direct from Devon Clothing ([devonclothing.com.au](http://devonclothing.com.au)).



The design featured on the polo was created by Ngarrindjeri artist Jordan Lovegrove. The college is represented along with the connections we make within our community. The large pathway leading through the artwork symbolises the learning journey we will travel together.

## Mobile Phones

As per the Department for Education policy, mobile phones are not allowed to be used at the college and must remain turned off and in bags during the day.

## Fees

The Materials & Services Charge is set by Aldinga Payinthe College Governing Council and communicated to families each year. The college has a range of payment options available:

### EFT

Direct payments can be made to the college's bank account:

BSB - **065 188**

Account Number - **1012 2583**

Please use your child's full name as the reference.

### Credit Card

The college has credit card facilities available. Please visit reception in the Community Hub if you would like to pay via credit card or contact the college on 7505 6100.

### Qkr!

Payment can be made through the Qkr! app. Download the app from your preferred app store.

## Out of School Hours Care

YMCA is operating an Early Learning and Care program and OSHC at Aldinga Payinthe College. For enrolment and enquiries, please refer to the YMCA website.

## Food and Facilities

Secondary learning community buildings have a series of 'Heat and Eat' kitchen facilities. These spaces are equipped with sinks, microwaves and sandwich grills. There are no fridge facilities. All users will need to undertake basic safety training prior to them being able to access these spaces. Misuse of these spaces will result in a loss of access, until re-training has occurred.

## Canteen

The college's canteen is managed by our service provider, *Rory's School Lunches*. All food complies with the Healthy Eating Guidelines. Lunches can be pre-ordered before 8:30am, and payment made through the Qkr! app. For more information visit <https://rorys.com.au/information-for-parents/>.





**Government  
of South Australia**

Department for Education

**Proud to learn on Kurna Land.**

**Aldinga Payinthe College**

150 Quinliven Road  
Aldinga SA 5173

P. (08) 7505 6100

E. [dl1914.info@schools.sa.edu.au](mailto:dl1914.info@schools.sa.edu.au)  
[aldingapayinthicollege.sa.edu.au](http://aldingapayinthicollege.sa.edu.au)